

Specification	Model	ERP
ZDC housing,insert(RH-rotation)	MS705-3E	MS705Z1A140026
ZDC housing,insert(LH-rotation)	MS705-3E-2	MS705Z3A140011
PA housing,insert(RH-rotation)	MS705-3E-F	MS705N00140007

Default cam: S1B4507 T=4 (cut out 8x8)

MS705-3E



RL

Main material and finish : Black powder coated ZDC housing, white zinc-plated steel cam

Application : Quarter-turn opening or closing

Remark: Default key K140

Performance parameter:

Maximum static load: 220N

Recommended nut tightening torque: 20N.m

Accessories

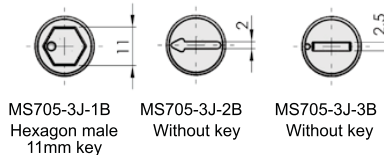
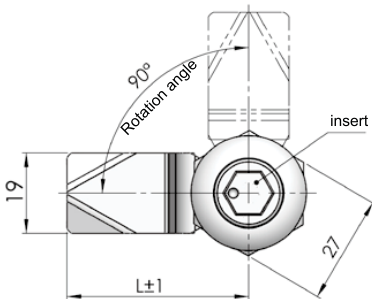
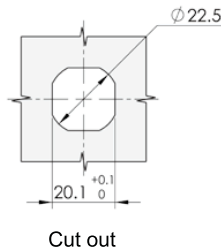
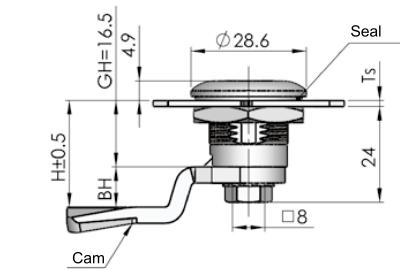
Electronic lock

Handle lock

Cylinder lock

Plane lock

Rod control lock



	MS705-3J-1B	MS705-3J-2B	MS705-3J-3B
ERP	MS705S4AT09001	MS705S4AT32004	MS705S4AT32003

Remark:Default cam S1B4507,T=4 (Optional cam8×8)

MS705-3J



IP 55

Main material and finish : Stainless steel housing,insert,nut,screw,cam.

Application: Quarter-turn opening or closing

Remark: Optional three types of insert.

ERP of Cam:S1B45Y07002

Performance parameter:

Maximum static load: 270N

Recommended nut tightening torque: 20N.m

Maximum input torque: 9N.m

Panel lock

Toggle and hook

Handles

Door stop

Hinge

Seal gasket