

- Accessories
- Electronic lock
- Handle lock
- Cylinder lock**
- Plane lock
- Rod control lock
- Panel lock
- Toggle and hook
- Handles
- Door stop
- Hinge
- Seal gasket

MS706



Main material and finish: Bright chrome plated ZDC housing and insert, white zinc plated steel cam

Application: Cam 180 degree rotation to open or lock

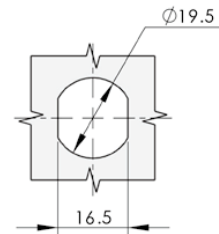
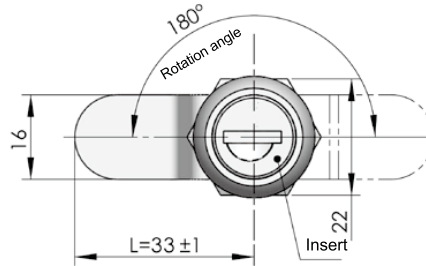
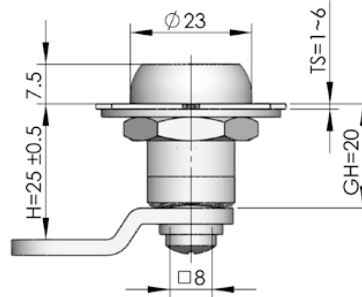
Remark: Default key K130

Default cam : S1B33Y06002

Performance parameter:

Maximum static load: 100N

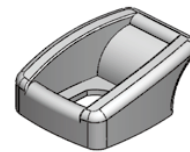
Recommended nut tightening torque: 20N.m



Cut out



WP003



HP002



HP003



DP001

| Model | ERP |
|---------|----------------|
| MS706-1 | MS706Z3A130001 |
| MS706-2 | MS706Z3A130012 |
| MS706-3 | MS706Z3A130004 |

Remark : Default cam S1B3306