

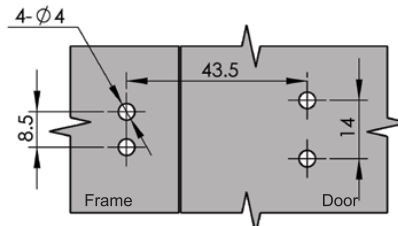
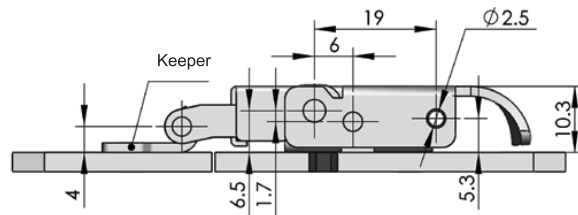
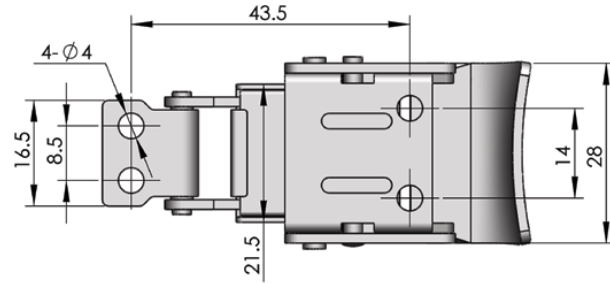
- Accessories
- Electronic lock
- Handle lock
- Cylinder lock
- Plane lock
- Rod control lock
- Panel lock
- Toggle and hook**
- Handles
- Door stop
- Hinge
- Seal gasket

DK624

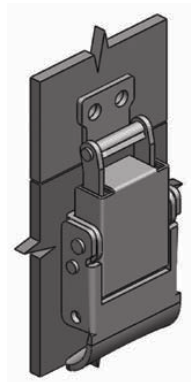


Main material and finish: Electrolytic stainless steel

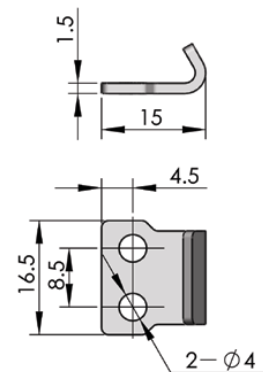
Performance parameter:  
Maximum static load: 800N



Cut out



Keeper



ERP

DK624S9C000002