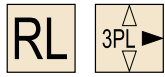


- Accessories
- Electronic lock
- Handle lock
- Cylinder lock
- Plane lock**
- Rod control lock
- Panel lock
- Toggle and hook
- Handles
- Door stop
- Hinge
- Seal gasket

MS839



Main material and finish: Pocked black powder coated handle and housing, bright chrome-plated profile insert, white zinc-plated steel support and cam

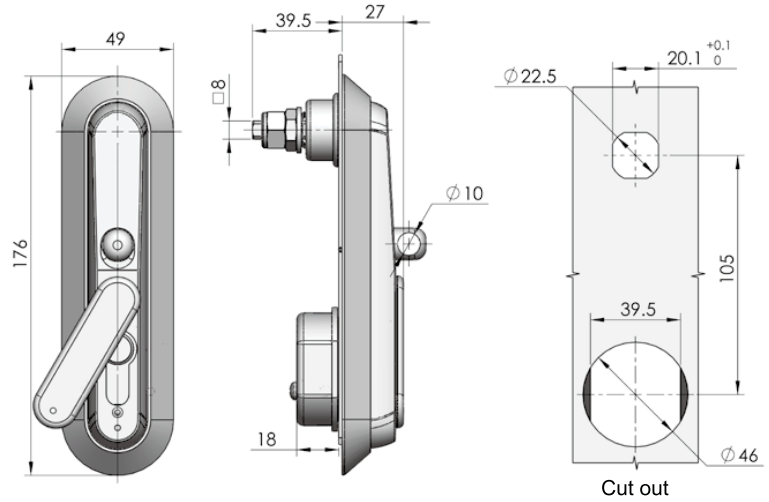
Application: Lead sealable, stop height is variable according to the adjusting nut on cam

Remark: Default TC01 profile insert, default key K140

Default Cam: 2888390001

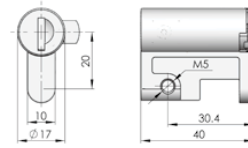
Performance parameter:

Handle load tension capability: $\phi 700\text{N}$
 Handle load torque capability: $\phi 40\text{N.m}$
 Maximum static load: 300N

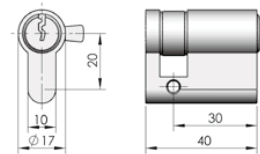


Remark: 8*8 cam series for option

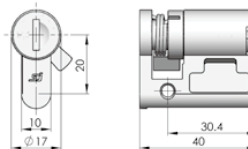
TC01(Default)



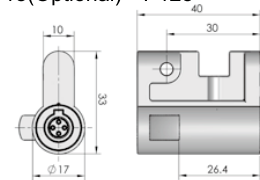
TC03-1(Optional)



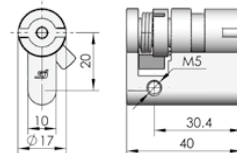
TC01-2(Optional)



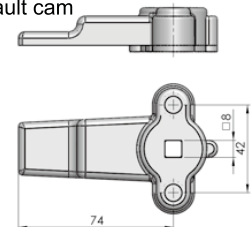
TC18(Optional)—P128



TC02-1(Optional)



Default cam



Specification	Model	ERP
ZDC handle and housing (Without padlock)	MS839-1	MS839Z1B031003
ZDC handle and housing (With padlock)	MS839-1-P	MS839Z1B140002
ZDC handle and PA housing (Without padlock)	MS839-1F	MS839N00140008
ZDC handle and PA housing (With padlock)	MS839-1F-P	MS839N00140002

Remark: Default cam S3B7400