

- Accessories
- Electronic lock
- Handle lock
- Cylinder lock**
- Plane lock
- Rod control lock
- Panel lock
- Toggle and hook
- Handles
- Door stop
- Hinge
- Seal gasket

MS844

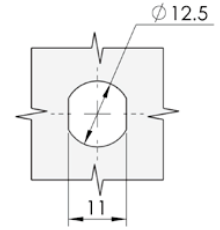
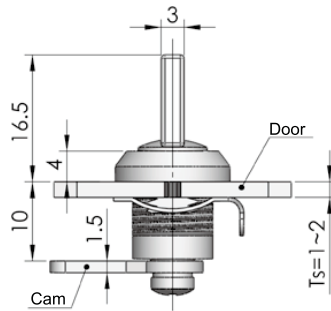


Main material and finish : Bright chrome-plated ZDC housing and handle, white zinc-plated steel cam

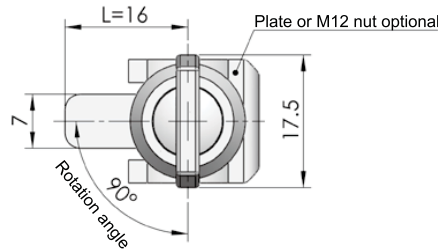
Application : Quarter-turn opening or closing

Default cam : S1W16Y00001

Performance parameter:
Maximum static load: 180N



Cut out



Specification	Model	ERP
Plate	MS844-1	MS844Z3A000001
Nut	MS844-2	MS844Z3A000002

Remark : Default cam S1W1600 (Cutout \varnothing 6x3.6)

MS845-1



MS845-3

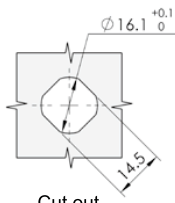
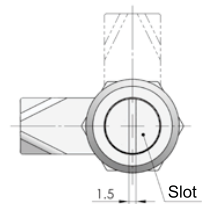
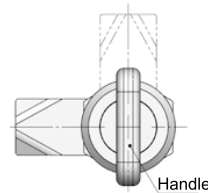
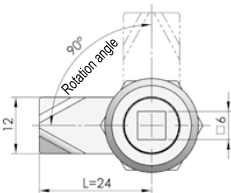
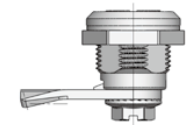
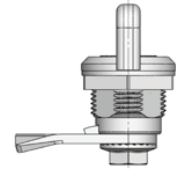
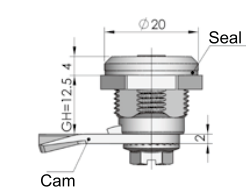
RL IP54

Main material and finish : Black powder coated ZDC housing and insert, white zinc-plated steel cam

Application : Quarter-turn opening or closing

Default cam : S1V24Y00001

Performance parameter:
Maximum static load: 220N



Cut out

Specification	Model	ERP
Square 6mm	MS845-1	MS845Z3AT05001
Slot	MS845-2	MS845Z1AT10007
Handle	MS845-3	MS845Z1A000013

Remark : Default cam S1V2400 (cut out 6x6)