

Accessories

Electronic lock


Handle lock

Cylinder lock

Plane lock

Rod control lock

MS804



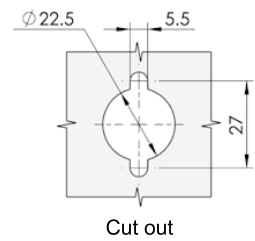
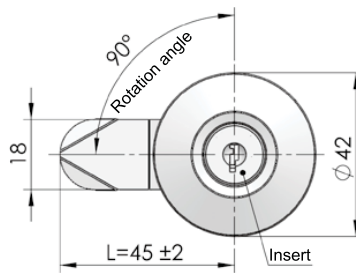
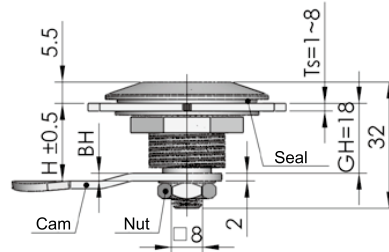
Main material and finish: Bright chrome-plated ZDC housing and insert, white zinc-plated steel cam

Application: Quarter-turn opening or closing

Remark: Default key K050

Default cam : S1B45Y02001 (Ts=2)

Performance parameter:
Maximum static load: 100N
Recommended nut tightening torque: 20N.m



ERP MS804Z3A050008

Remark : Default cam S1B4502 (cut out 8x8)

Panel lock

Toggle and hook


Handles

Door stop

Hinge

Seal gasket

MS805



RL

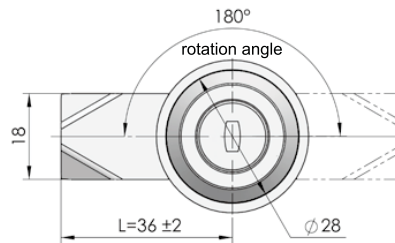
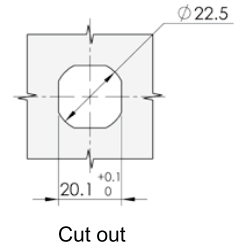
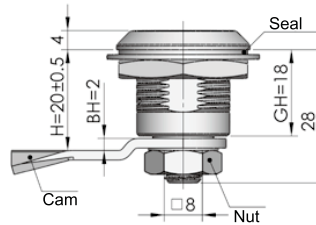
Main material and finish : Black powder coated ZDC housing and insert, white zinc-plated steel cam

Application : 180 degree rotation opening or closing

Remark : Default key K040

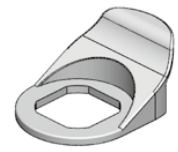
Default cam : S1B36Y02001

Performance parameter:
Maximum static load: 270N
Recommended nut tightening torque: 20N.m
Maximum input torque: 20N.m



ERP MS805Z2A040005

Remark : Default cam S1B3602, T=2 (Cut out 8x8)



HP001 Handle pull (Optional)



WP002 Water-proof cap (Optional)