



ETERNA
SOLUTIONS

HANDLE LOCKS



WWW.ITISETERNA.COM



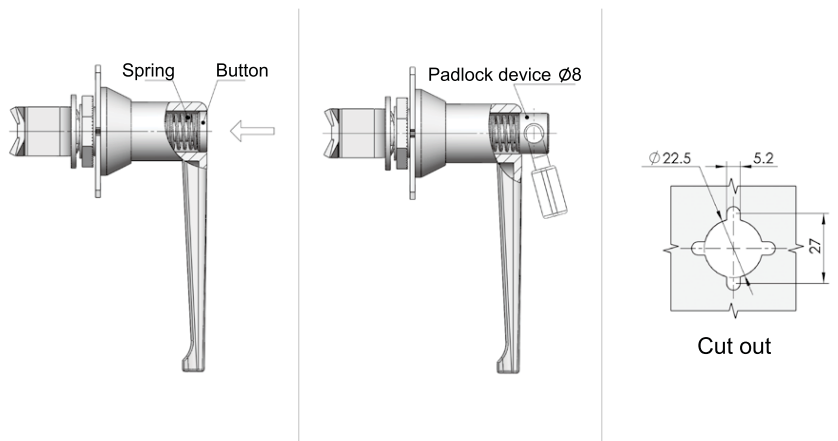
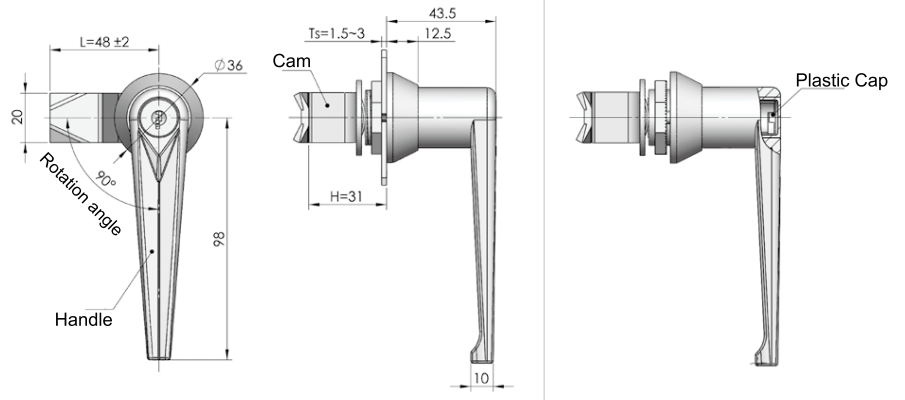
HANDLE LOCK SERIES

 MS301	 MS304	 MS305	 MS306	 MS307
 MS308	 MS310	 MS312	 MS313	 MS314
 MS315	 MS316	 MS317	 MS319	 MS320
 MS324	 MS353	 MS807-1	 MS842	 MS859
 MS868	 MS887-1	 MS887-2	 MS887-3	 MS887-4

Cylinder lock

- Accessories
- Electronic lock
- Handle lock**
- Cylinder lock
- Plane lock
- Rod control lock
- Panel lock
- Toggle and hook
- Handles
- Door stop
- Hinge
- Seal gasket

MS301
MS302



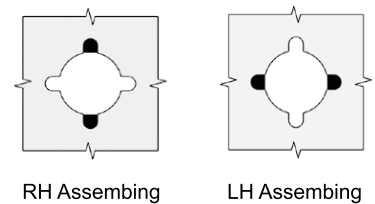
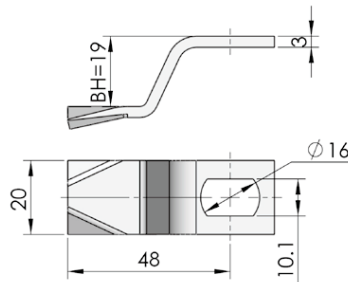
RL

Main material and finish : Bright chrome-plated ZDC handle and housing, white zinc-plated steel cam, bright chrome plated button and white zinc plated shaft
 Application : Quarter-turn opening or closing
 Remark : Default Key K050

Default cam : S1H48Y19002

Performance parameter:
 Maximum static load: 220N
 Recommended nut tightening torque: 20N.m
 Maximum input torque: 15N.m

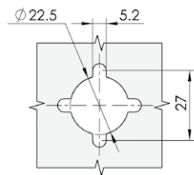
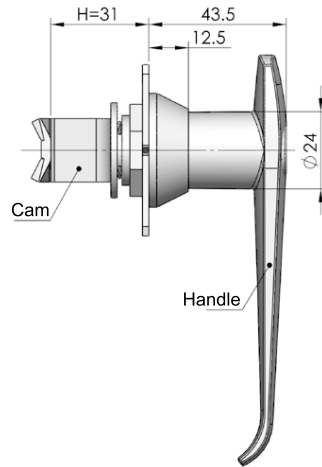
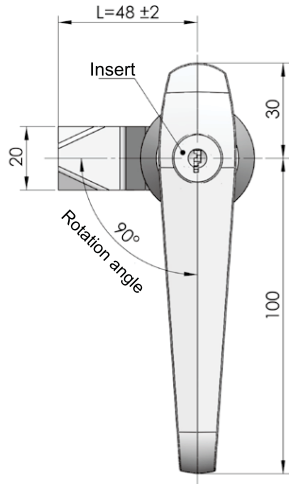
Cam S1H4819 (Optional)



Remark: shadow parts shows mounting hole allocation between housing and door panel

Specification	Model	ERP
With insert	MS301-1	MS301Z3A050008
Without insert	MS301-2	MS301Z3A000001
With button type	MS302-1	MS302Z3A000001
With padlock type	MS302-2	MS302Z3A000008

Remark : Default Cam S1H4819



Cut out

Remark : RH, LH, and cam selection refer to MS301 on catalogue

ERP

MS304Z3A050008

Remark : Default cam S1H4819

MS304



RL

Main material and finish : Bright chrome-plated ZDC handle and housing, white zinc-plated steel cam

Application : Quarter -turn opening or closing

Remark : Default Key K050

Default cam : S1H48Y19002

Performance parameter:

Maximum static load: 220N

Recommended nut tightening torque: 20N.m

Maximum input torque: 15N.m

Accessories

Electronic lock

Handle lock

Cylinder lock

Plane lock

Rod control lock

Panel lock

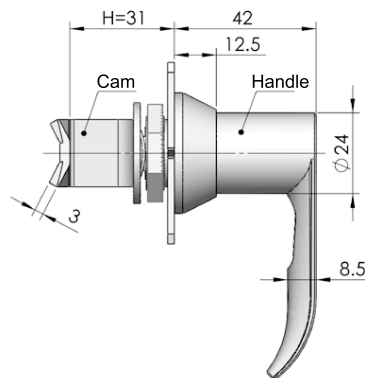
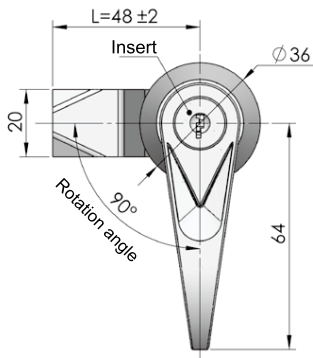
Toggle and hook

Handles

Door stop

Hinge

Seal gasket



Remark:cut out size, RH, LH, and cam selection refer to MS301 on catalogue

MS306



RL

Material and finish : Bright chrome-plated ZDC handle and housing,white zinc-plated steel cam,bright chrome plated steel button and shaft

Application : Quarter-turn opening or closing

Remark : Default key K050

Default cam : S1H48Y19002

Performance parameter:


Maximum static load: 220N

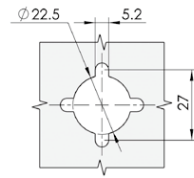
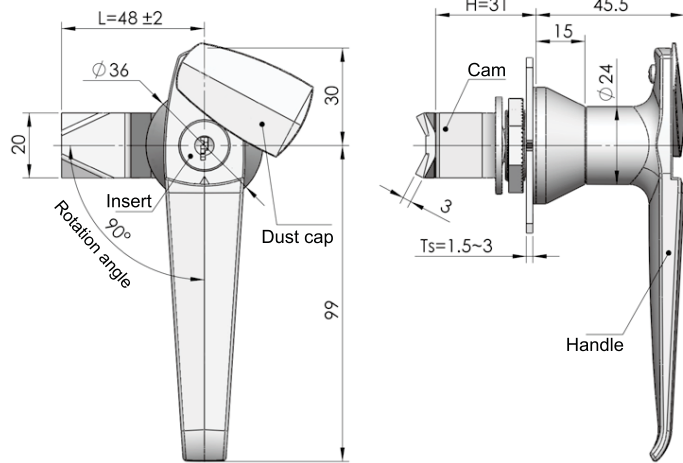
Recommended nut tightening torque: 20N.m

Maximum input torque: 15N.m

Specifcation	Model	ERP
With insert	MS306-1	MS306Z3A050005
Without insert	MS306-2	MS306Z3A000007
With button type	MS306-3	MS306Z3A000002
With padlock type	MS306-4	MS306Z3A000006

Remark : Default Cam S1H4819


Accessories	<p>MS307</p>  <div style="display: flex; justify-content: space-around; margin-top: 10px;"> <div style="border: 1px solid black; padding: 2px 5px; font-weight: bold;">RL</div> <div style="border: 1px solid black; padding: 2px 5px; font-weight: bold;">IP54</div> </div> <p>Main material and finish : Bright chrome-plated ZDC handle and housing, white zinc-plated steel cam Remark : Default key K050</p> <p>Default cam : S1H48Y19002</p> <p>Performance parameter: Maximum static load:220N Recommended nut tightening torque:20N.m Maximum input torque:15N.m</p>
Electronic lock	
Handle lock	
Cylinder lock	
Plane lock	
Rod control lock	

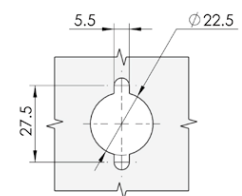
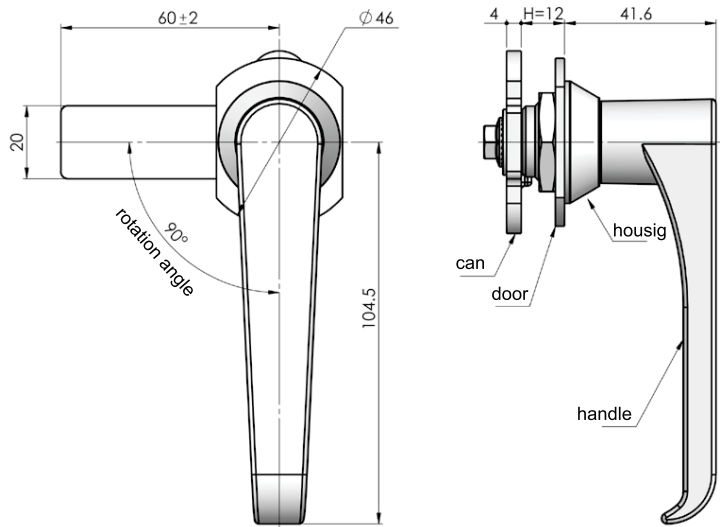


Cut out

Remark : RH,LH, and cam selection please refer to MS301 on catalogue

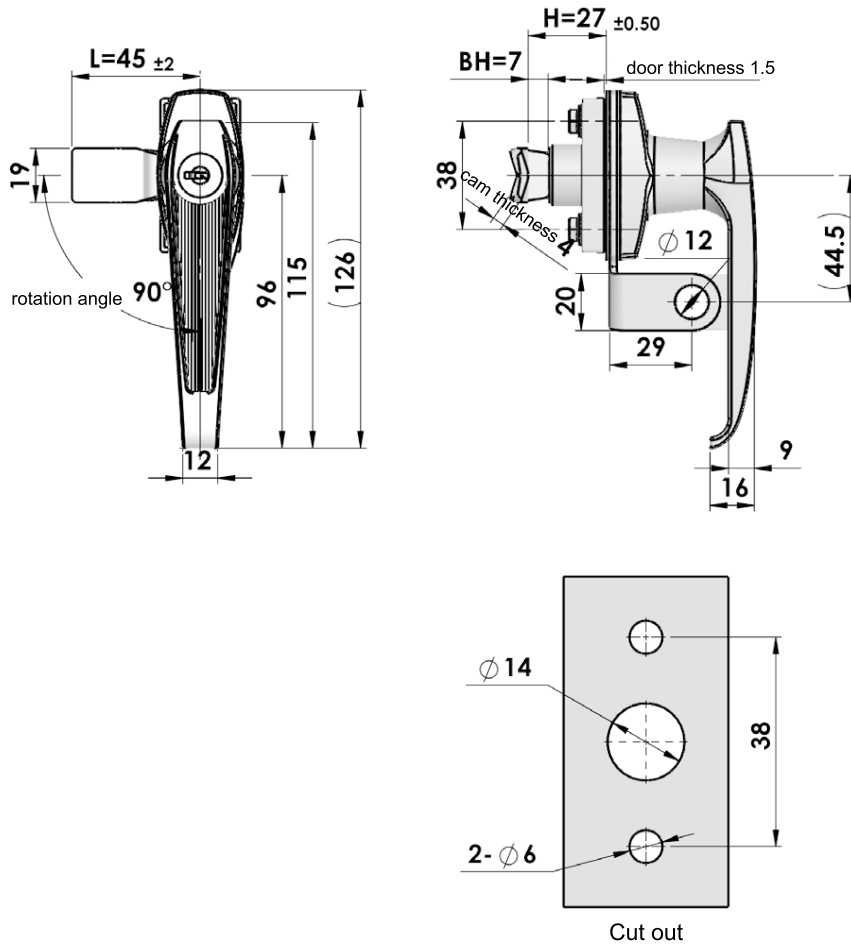
ERP MS307Z3A050011
Remark : Default cam S1H4819

Panel lock	<p>MS308-2</p>  <div style="display: flex; justify-content: space-around; margin-top: 10px;"> <div style="border: 1px solid black; padding: 2px 5px; font-weight: bold;">RL</div> <div style="border: 1px solid black; padding: 2px 5px; font-weight: bold;">IP54</div> </div> <p>Main material and finish: Bright chrome plated ZDC handle, housing and white zinc plated steel cam. Application: Quarter-turn opening and closing. Remark: No key,cut out size same as MS308</p> <p>Performance parameter Maximum static load: 220N Recommended nut tightening torque:20N.m Maximum input torque: 15N.m</p>
Toggle and hook	
Handles	
Door stop	
Hinge	
Seal gasket	



Cut out

ERP MS308Z3A000004



MS315-4



RL IP55

Main material and finish: Bright chrome-plated ZDC handle, housing, insert, color zinc plated carbon steel shaft, stainless steel lock panel.

Application: Quarter-turn opening and closing.

Remark: Default key K280

Performance parameter

Handle load tension capability: 780N

Recommended nut tightening torque: 5N.m

Maximum input torque: 15N.m

Feature Description	Product item	ERP
with cylinder, with padlock device, LH	MS315-4-Z	MS315Z3A280018
with cylinder, with padlock device, RH	MS315-4-Y	MS315Z3A280013

Accessories

Electronic lock

Handle lock

Cylinder lock

Plane lock

Rod control lock

Panel lock

Toggle and hook

Handles

Door stop

Hinge

Seal gasket

- Accessories
- Electronic lock
- Handle lock**
- Cylinder lock
- Plane lock
- Rod control lock
- Panel lock
- Toggle and hook
- Handles
- Door stop
- Hinge
- Seal gasket

MS317



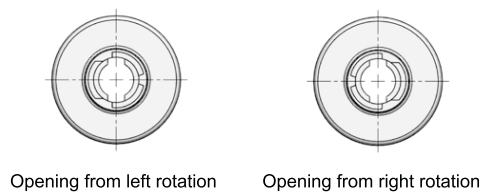
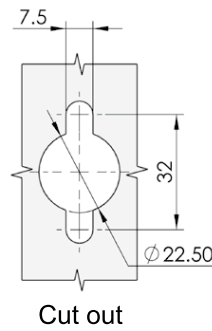
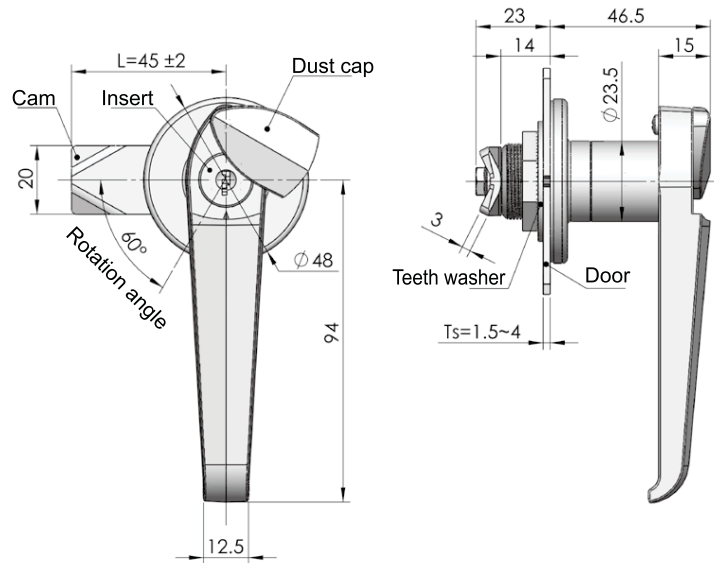
RL **IP54**

Main material and finish : Bright chrome-plated ZDC handle, housing and insert, white zinc-plated steel cam, teeth washer
 Application : 60 degree rotation opening or closing

Remark : Default key K050

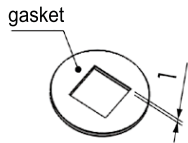
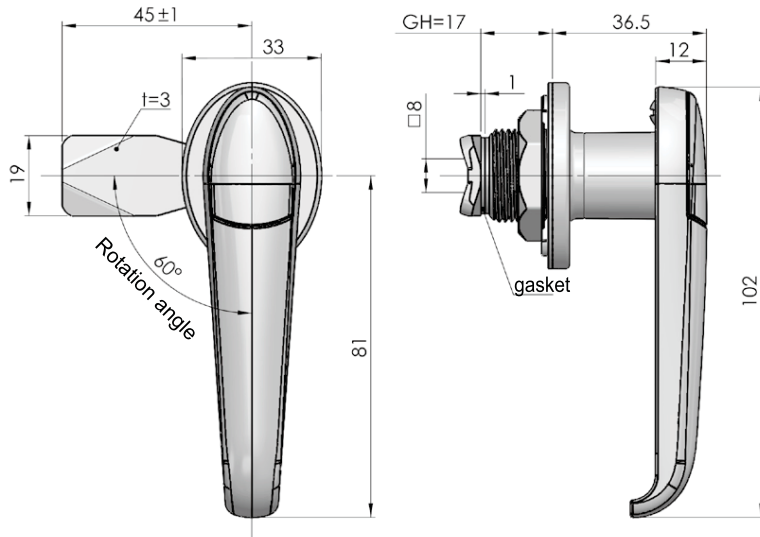
Default cam : S1B45Y00002

Performance parameter:
 Maximum static load: 140N
 Recommended nut tightening torque: 20N.m
 Maximum input torque: 15N.m

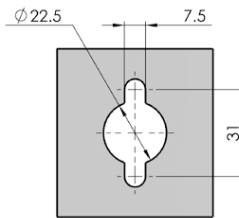


ERP MS317Z3A050001

Remark : Default cam S1B4500



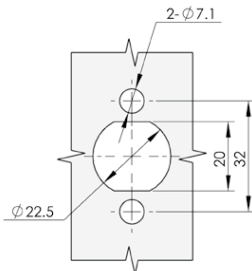
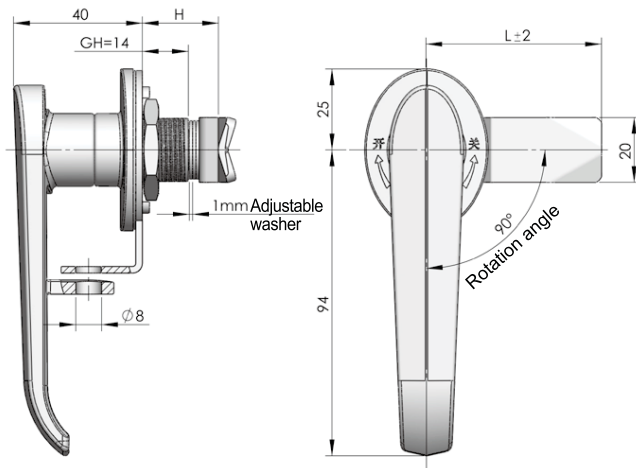
Remark : Change the location of keeper and cam installation position can be adjusted groundwork height GH



Cut out

ERP

MS317Z3A011001



Cut out

ERP

MS322Z2B000003

Remark : Default cam S1B5406 (square 8*8 cam optional)

MS317-1A



RL IP65

Main material and finish: Bright chrome plated ZDC handle, housing and dust cap.
Application: 60 degree rotation opening or closing.

Remark: Default key K110.

Performance parameter:

Maximum static load: 220N

Recommended nut tightening torque: 20N.m

Maximum input torque: 15N.m

MS322-2



L IP65 3PL

Main material and finish : Nanometer painting ZDC handle and housing, white zinc-plated steel padlock and cam
Application : 90 degree rotation opening or closing, pad-lockable

Default cam : S1B54Y06001

Performance parameter:

Maximum static load: 220N

Recommended nut tightening torque: 20N.m

Maximum input torque: 15N.m

Accessories

Electronic lock

Handle lock

Cylinder lock

Plane lock

Rod control lock

Panel lock

Toggle and hook

Handles

Door stop

Hinge

Seal gasket

- Accessories
- Electronic lock
- Handle lock**
- Cylinder lock
- Plane lock
- Rod control lock
- Panel lock
- Toggle and hook
- Handles
- Door stop
- Hinge
- Seal gasket

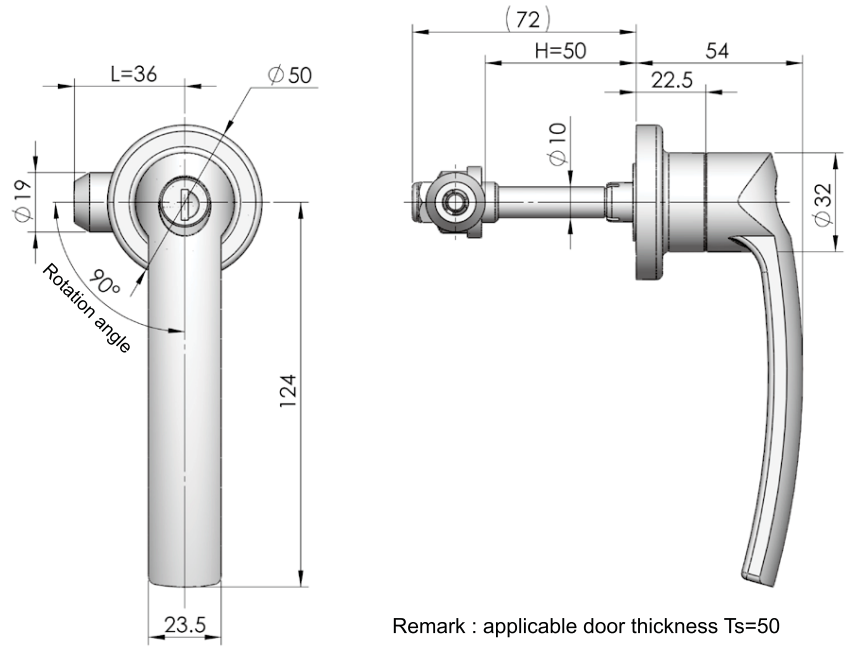
MS320



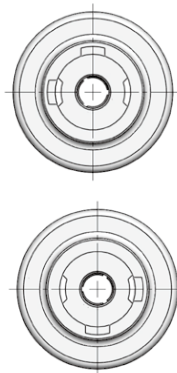
RL

Main material and finish : PA handle and housing, white zinc-plated steel shaft
 Application : Quarter-turn opening or closing
 Remark : Default key K160

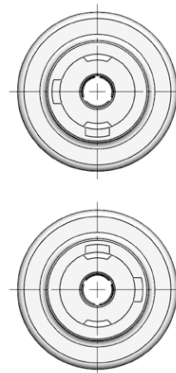
Performance parameter
 Handle load tension capability: 91N
 Maximum input torque: 10N.m



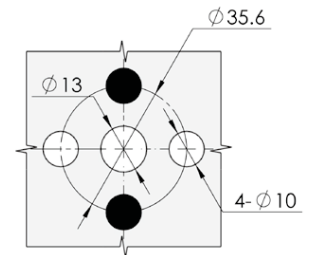
Installation Method



Horizontal hole position (housing)



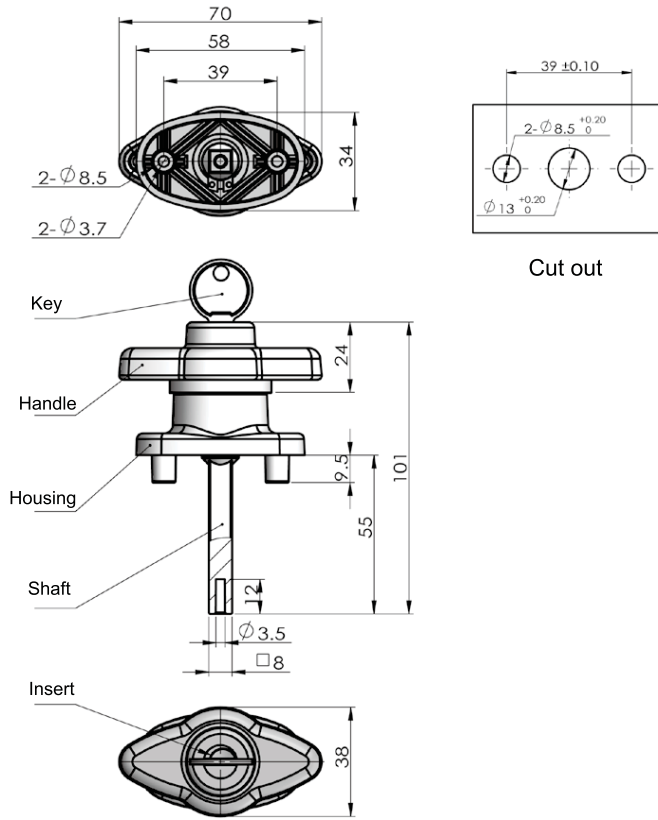
Vertical hole position (housing)



Cut out

When housing is horizontal hole position, handle should be counterclockwise rotation
 When housing is vertical hole position, handle should be clockwise rotation

ERP MS320N00160004



ERP	MS323N00140001
-----	----------------

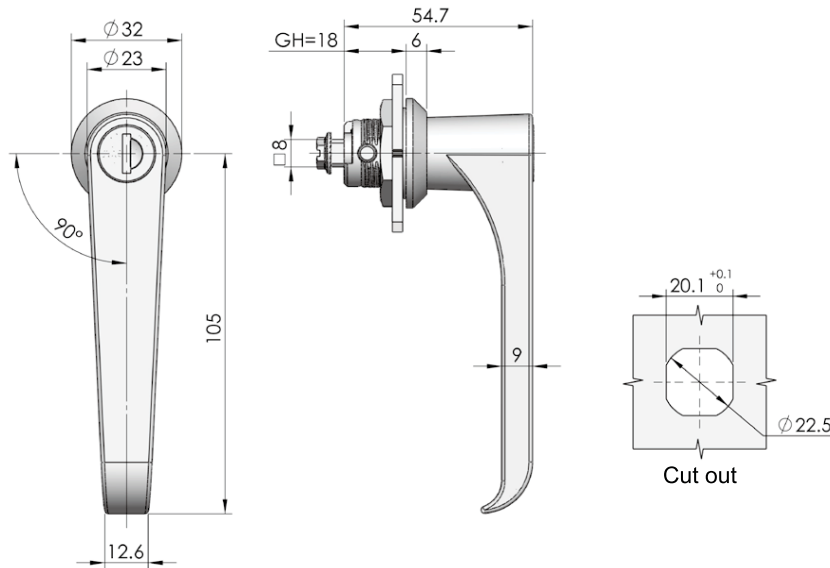


RL

Material: PA6+30%GF black handle, and housing.
 Application: 90°rotation opening and closing.
 Remark: L2D0143 cylinder components(with key), white zinc plated zinc alloy/K14 Blank key.

Performance parameter
 Handle load tension capability: 1750N
 Maximum input torque: 15N.m

- Accessories
- Electronic lock
- Handle lock**
- Cylinder lock
- Plane lock
- Rod control lock



	MS324-1 Black powder coating ZDC	MS324-1B Stainless steel
ERP	MS324Z1A140010	MS324S4B140007

Remark: Default cam S1B4507 (Square 8*8 cam optional)



RL IP54

Main material and finish : ZDC handle and housing, steel cam
 Application : Handle 90 degree rotation opening or closing
 Remark : Default key K140

Default cam : S1B45Y07002

Performance parameter:
 Maximum static load: 230N
 Recommended nut tightening torque: 20N.m
 Maximum input torque: 20N.m

- Panel lock
- Toggle and hook
- Handles
- Door stop
- Hinge
- Seal gasket

- Accessories
- Electronic lock
- Handle lock
- Cylinder lock
- Plane lock
- Rod control lock
- Panel lock
- Toggle and hook
- Handles
- Door stop
- Hinge
- Seal gasket



Main material and finish : Black powder coating ZDC housing and handle, white zinc plating steel cam

Application : 90 degree rotation opening or closing

Remark : Default key K140

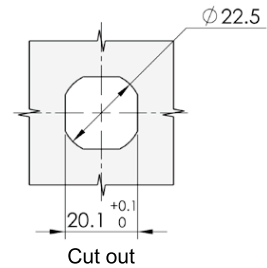
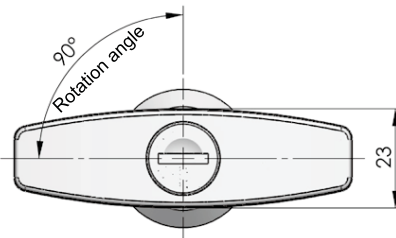
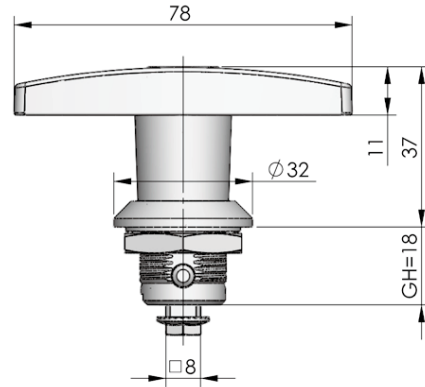
Default cam : S1B45Y07020

Performance parameter:

Maximum static load: 270N

Recommended nut tightening torque: 20N.m

Maximum input torque: 20N.m



	MS324-2 With insert	MS324-2A Without insert
ERP	MS324Z1A140040	MS324Z1A000002

Remark : Default cam S1B4507 (square 8*8 cam optional)



Main material and finish: Black powder coating ZDC housing and handle, bright chrome plated lock cylinder components.

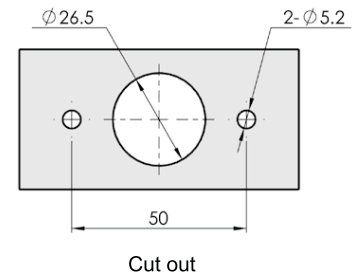
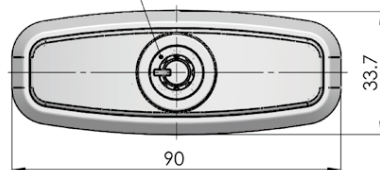
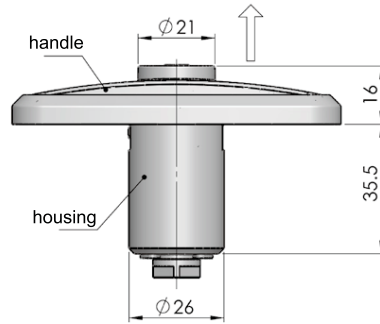
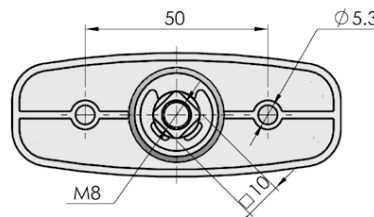
Application: Insert 180° rotation opening, handle bounces automatically and 360° rotation freely.

Remark: Default key K58-3

Performance parameter:

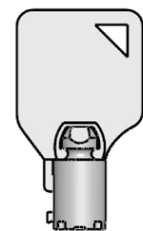
Maximum static load: 270N

Maximum input torque: 20N.m

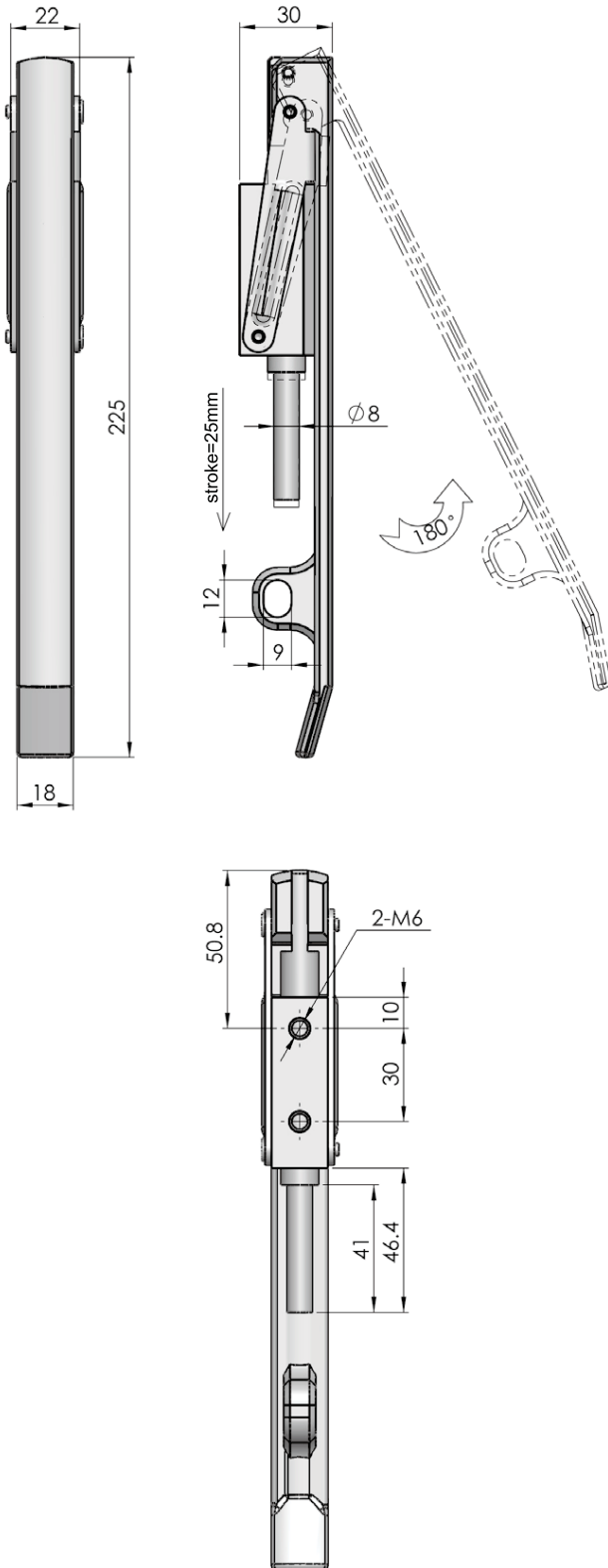


ERP	MS324Z2AE04007
-----	----------------

Remark: default cam S1C7200



Default key K58-3



MS353



Main material and finish: White zinc plated ZDC housing, shaft, and holder.
 Anti-corrosive Spraying
 Application: Handle 180° rotation opening or closing, stroke 25mm.

Performance parameter:
 Handle load tension capability: 490N

Accessories

Electronic lock

Handle lock

Cylinder lock

Plane lock

Rod control lock

Panel lock

Toggle and hook

Handles

Door stop

Hinge

Seal gasket

ERP

MS353Z3D000001

- Accessories
- Electronic lock
- Handle lock**
- Cylinder lock
- Plane lock
- Rod control lock
- Panel lock
- Toggle and hook
- Handles
- Door stop
- Hinge
- Seal gasket

MS807-1



MS807-2



MS807-3

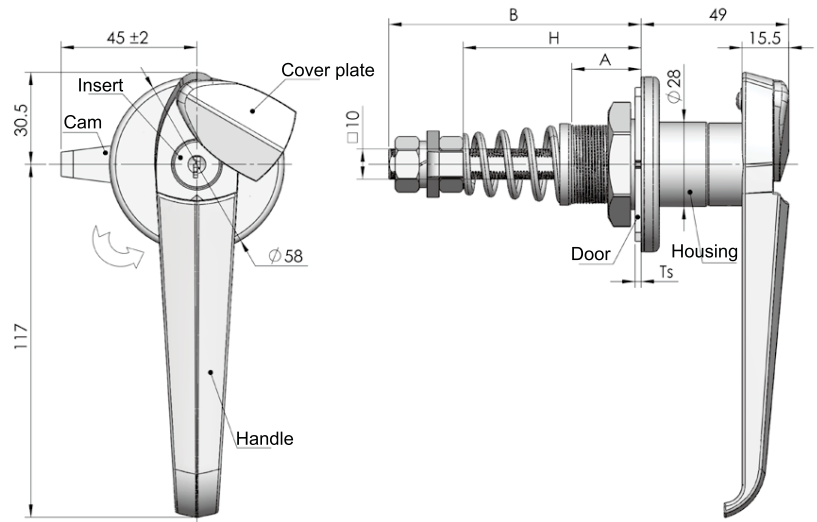


R **L** **IP54**

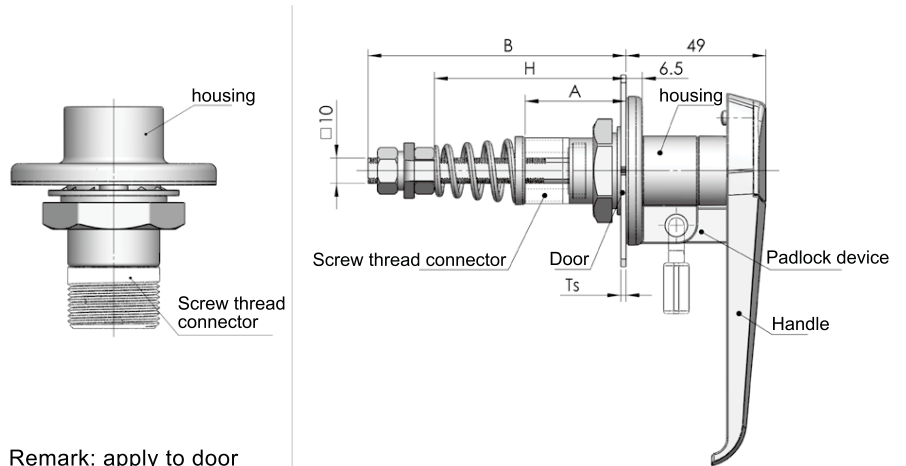
Main material and finish : Bright chrome-plated ZDC handle, housing, insert and dust-tight cap, white zinc-plated steel cam, teeth washer, and shaft
 Application : Cam adjustable
 Remark: Default key K050

Default cam: S1C45Y00003(Steel)
 S1C45Y00004(Stainless steel)

Performance parameter:
 Maximum static load: 242N
 Recommended nut tightening torque: 30N.m
 Maximum input torque: 23N.m

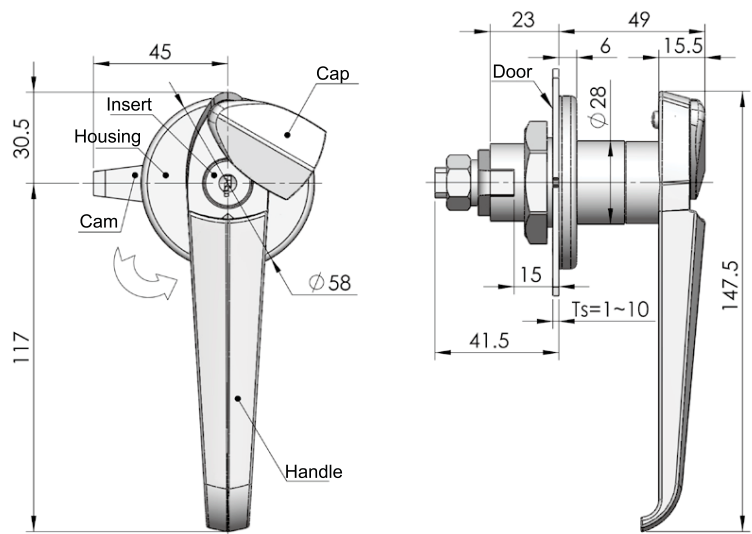


MS807-1



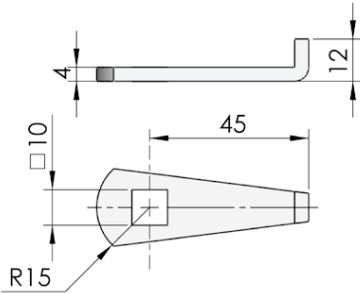
MS807-2

Remark: apply to door thickness £10mm

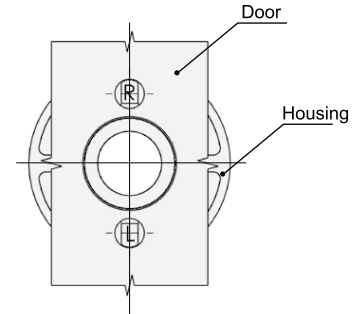
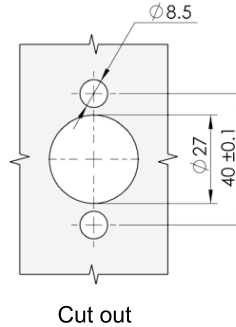


MS807-3

Default cam



Remark: Default cam drawing cut out is square 10mm, other cam selection refer to cam list



Note : if it is used for 60 RH and LH, the door can be opened both right and left through housing 180 rotation assembling position, it is the dorsal view after lock is assembled on the door

Specif cation		MS807-1 Series			
		Bright chrome-plated ZDC housing, handle, cap		S.S housing, handle, cap	
		Model	ERP	Model	ERP
A=23 B=83 H=45~58	60° for RH and LH	MS807-1	MS807Z3A050029	MS807-1B	MS807S4A050010
	90° RH	MS807-1-Y	MS807Z3A050036		
	90° LH	MS807-1-Z	MS807Z3A050039		
A=40 B=103 H=52~75	60° for RH and LH	MS807-1-D1	MS807Z3A050002	MS807-1B-1	MS807S4A050011
	90° RH	MS807-1-Y1	MS807Z3A050005		
	90° LH	MS807-1-Z1	MS807Z3A050008		
A=63 B=103 H=75~80	60° for RH and LH	MS807-1-D2	MS807Z3A050003	MS807-1B-2	MS807S4A050012
	90° RH	MS807-1-Y2	MS807Z3A050006		
	90° LH	MS807-1-Z2	MS807Z3A050009		
Specif cation		MS807-2 Series			
		Bright chrome-plated ZDC housing, handle, cap		S.S housing, handle, cap	
		Model	ERP	Model	ERP
A=23 B=83 H=45~58	60° for RH and LH				
	90° RH	MS807-2-Y	MS807Z3A050011	MS807-2B-Y	MS807S4A050001
	90° LH	MS807-2-Z	MS807Z3A050010	MS807-2B-Z	MS807S4A050019
Specif cation		MS807-3 Series			
		Bright chrome-plated ZDC housing, handle, cap		S.S housing, handle, cap	
		Model	ERP	Model	ERP
	60° for RH and LH	MS807-3	MS807Z3A050017	MS807-3B	MS807S4A050003
	90° RH	MS807-3-Y	MS807Z3A050018	MS807-3B-Y	MS807S4A050024
	90° LH	MS807-3-Z	MS807Z3A050019	MS807-3B-Z	MS807S4A050025

Accessories

Electronic lock

Handle lock

Cylinder lock

Plane lock

Rod control lock

Panel lock

Toggle and hook

Handles

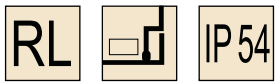
Door stop

Hinge

Seal gasket

- Accessories
- Electronic lock
- Handle lock**
- Cylinder lock
- Plane lock
- Rod control lock
- Panel lock
- Toggle and hook
- Handles
- Door stop
- Hinge
- Seal gasket

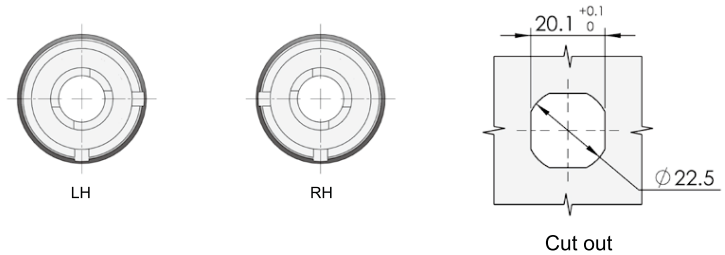
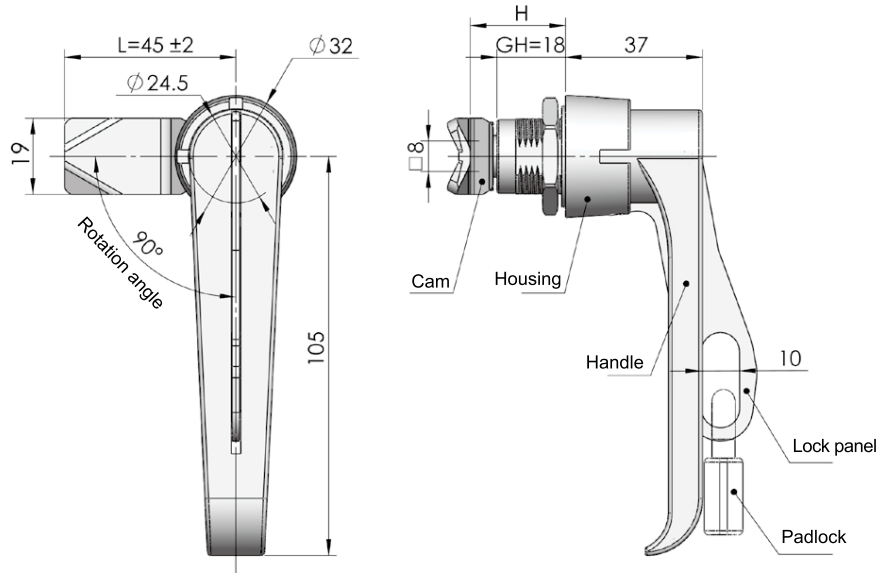
MS842



Main material and finish : Black pocked coated ZDC handle and housing, white zinc-plated steel cam, stainless steel lock panel or whole stainless steel for selection
 Application : Quarter-turn opening or closing, padlockable

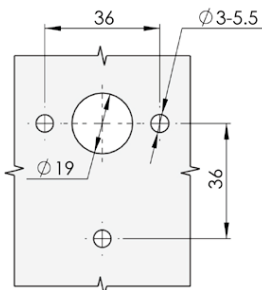
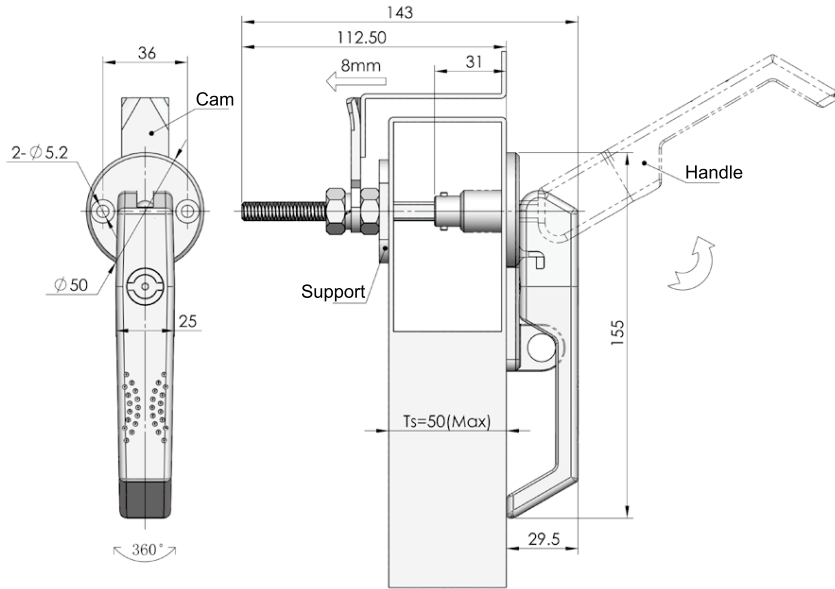
Default cam : S1B45Y07002
 S1B45Y07022

Performance parameter:
 Maximum static load: 270N
 Recommended nut tightening torque:20N.m
 Maximum input torque: 25N.m



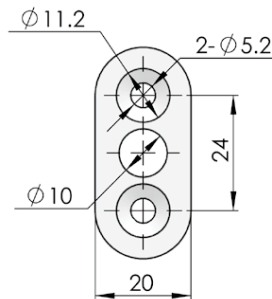
Specification	Model	ERP
ZDC	MS842	MS842Z1B000003
Stainless steel	MS842-1B	MS842S4B000001

Remark : Default cam S1B4507 (square 8*8 cam optional)



Cut out

Support (Accessory)



- Double bit
4mm
- Triangular
8mm
- Square
8x8mm
- Square
7x7mm
- Square
6x6mm
- Hexagon
female 10mm
- Slot
- Triangular
7mm

Specification	Model	ERP
Double bit	MS859-1-1	MS859Z1BT01001
Triangular 8mm	MS859-1-2	MS859Z1BT04001
Square 8x8mm	MS859-1-3	MS859Z1BT07001
Square 7x7mm	MS859-1-4	MS859Z1BT06001
Square 6x6mm	MS859-1-5	MS859Z1BT05001
Hexagon Female	MS859-1-6	MS859Z1BT09002
Slot	MS859-1-7	MS859Z1BT10001
Triangular 7mm	MS859-1-8	MS859Z1BT14001

Remark : ERP excludes cam (cut out square 8mm)

MS859



Main material and finish : PA handle, pocked black powder coated ZDC housing, bright chrome-plated ZDC insert, white zinc-plated steel shaft

Application : Quarter-turn opening or closing

Remark : Optional key K15 series

Default cam : S1B45Y00005(Ts=4)

Performance parameter:

Handle load tension capability: 105N

Maximum static load: 220N

Maximum input torque: 20N.m

Accessories

Electronic lock

Handle lock

Cylinder lock

Plane lock

Rod control lock

Panel lock

Toggle and hook

Handles

Door stop

Hinge

Seal gasket

Accessories

Electronic lock

Handle lock

Cylinder lock

Plane lock

Rod control lock

Panel lock

Toggle and hook

Handles

Door stop

Hinge

Seal gasket

MS868



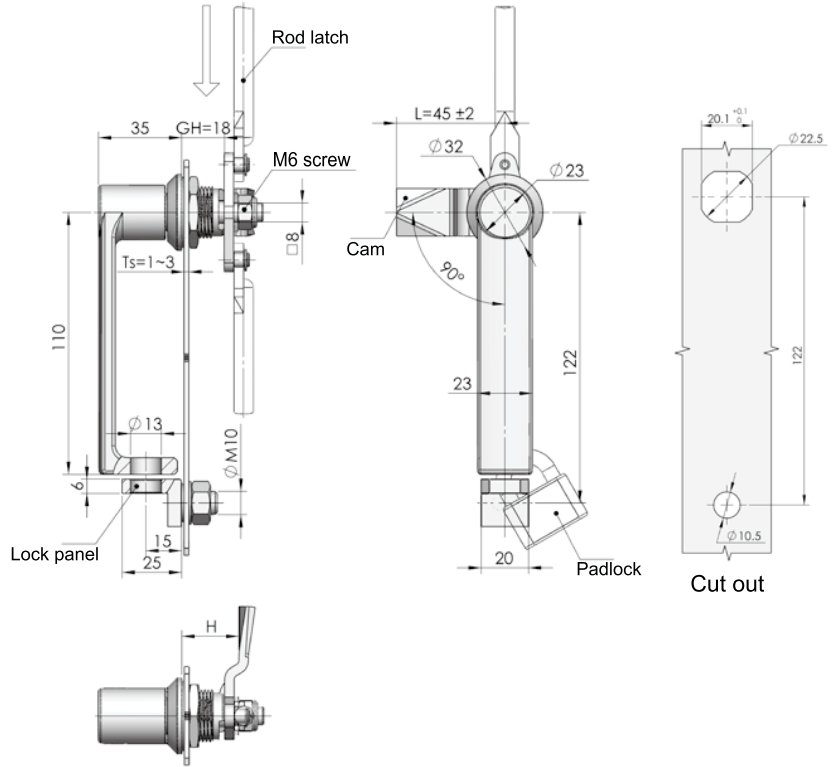
Main material and finish : Black powder coated ALU handle and lock panel,ZDC housing,white zinc plated steel cam
Application : Quarter-turn opening or closing, padlock available

Default cam : 2882450603

Performance parameter:

Maximum static load: 270N

Maximum input torque: 20N.m



ERP

MS868Z1A000001

Remark : Default cam DS3B4506 (square 8*8 cam optional)

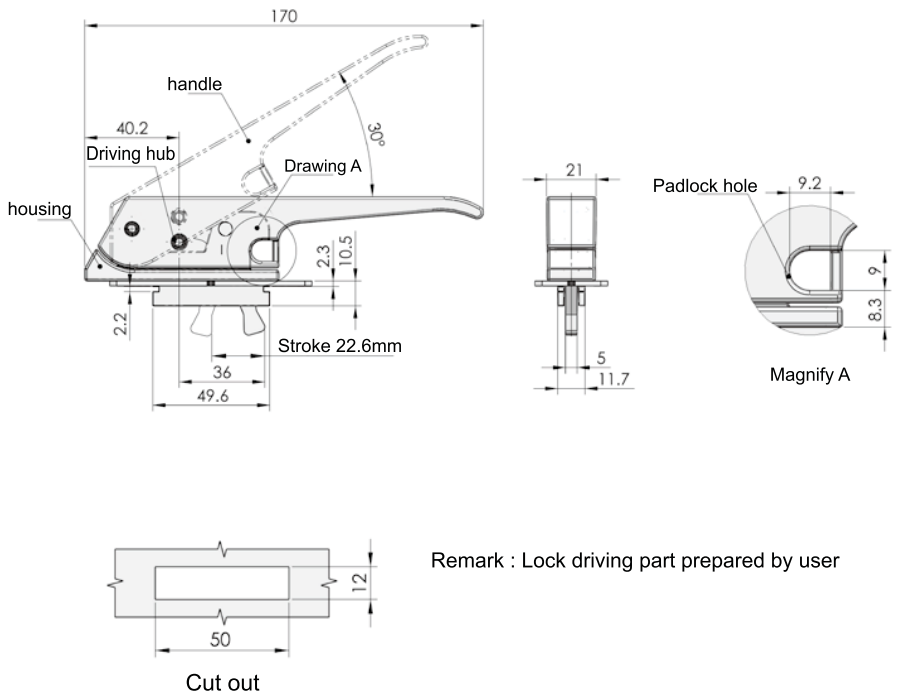
MS887-1



Main material and finish : Black powder coated ZDC housing, handle, white zinc-plated steel cam
Application : Handle combines with latch

Performance parameter:

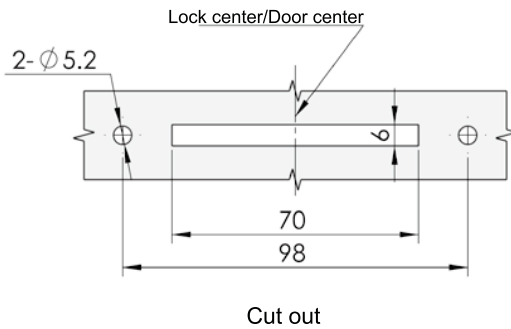
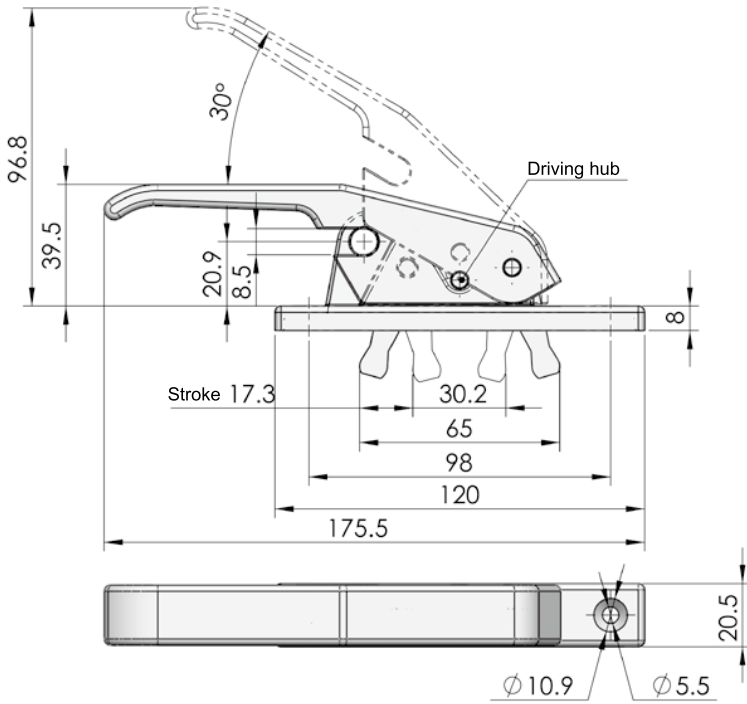
Handle load tension capability: 100N



ERP

MS887Z1A000001

Remark : Lock driving part prepared by user



Remark : Lock driving part prepared by user

MS887-2



Main material and finish : Blue gray (RAL7035) powder coated aluminum housing, handle, white zinc-plated steel cam

Application : Handle combines with latch

Performance parameter:

Handle load tension capability: 100N

Accessories

Electronic lock

Handle lock

Cylinder lock

Plane lock

Rod control lock

Panel lock

Toggle and hook

Handles

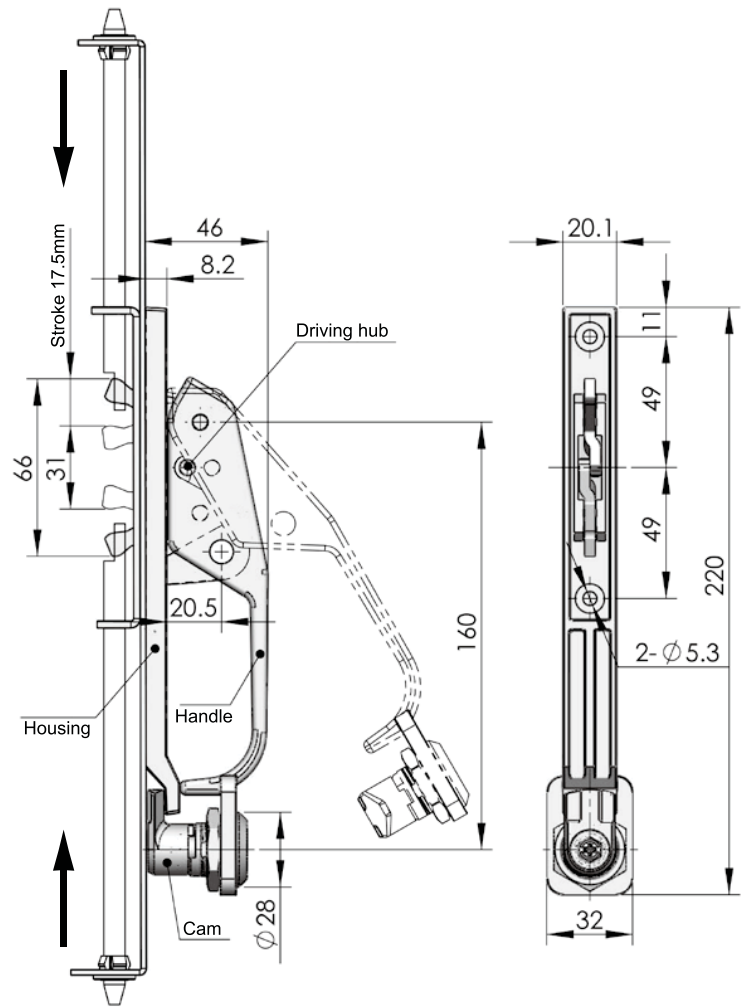
Door stop

Hinge

Seal gasket

- Accessories
- Electronic lock
- Handle lock**
- Cylinder lock
- Plane lock
- Rod control lock
- Panel lock
- Toggle and hook
- Handles
- Door stop
- Hinge
- Seal gasket

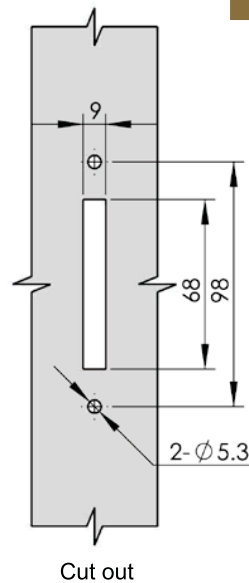
MS887-3



Main material and finish : Blue gray (RAL 7012) powder coated ZDC housing, handle and cylinder barrel
 Application : Handle combines with latch, rod-latch system on sketch is just for reference, generally prepared by user
 Remark : Optional K15-01C

Performance parameter:
 Handle load tension capability: 1350N

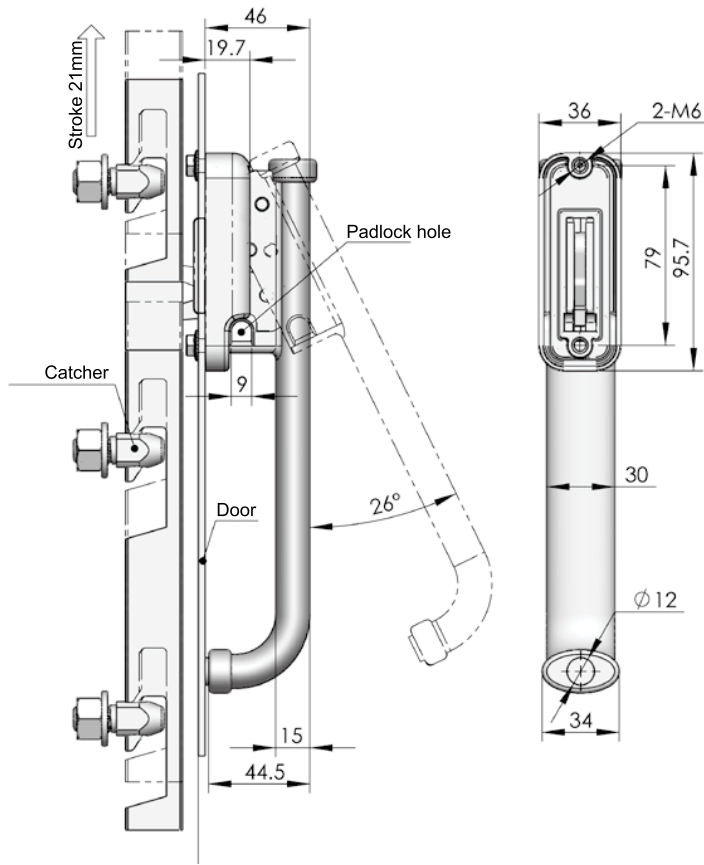
ERP MS887Z1DT02001



Select K15 series as per various inserts

Technical drawing of a K15 series handle. Dimensions include: 49, 70, Ø9, and 13.5.

ERP 3290151001



ERP MS887Z1D000001

MS887-4

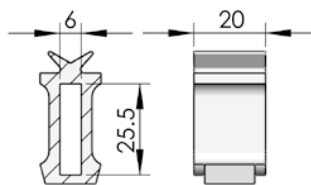


Main material and finish : Blue gray (RAL 7012) powder coated ZDC housing, and handle
 Application : Handle combines with latch, rod-latch system on sketch is just for reference, generally prepared by user

Performance parameter:
 Handle load tension capability: 1800N

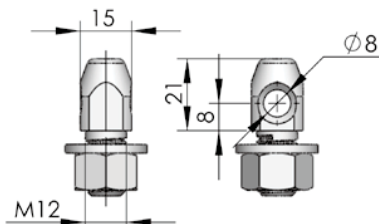
- Accessories
- Electronic lock
- Handle lock**
- Cylinder lock
- Plane lock
- Rod control lock
- Panel lock
- Toggle and hook
- Handles
- Door stop
- Hinge
- Seal gasket

PA guider (Optional)



ERP 3438874001

Catcher (Optional)



ERP 3248874001

